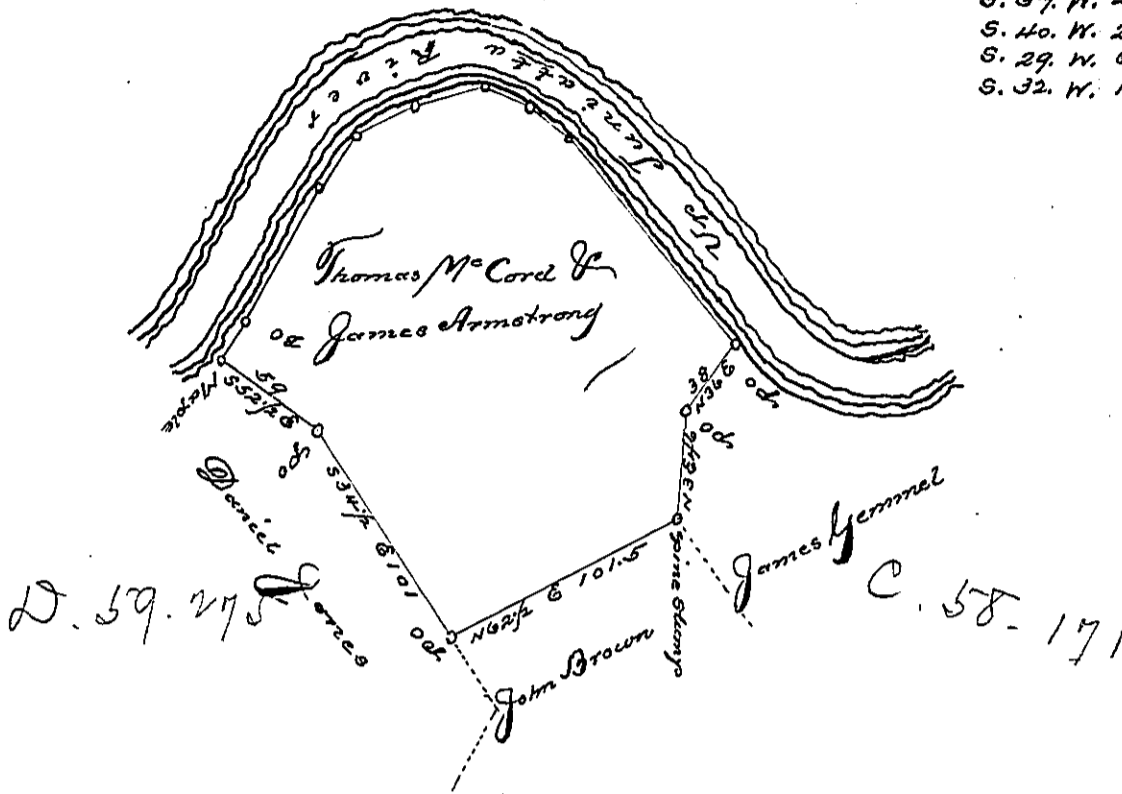


Courses & Distances up Juniatta  
river Beginning at a post  
formerly a B.O.P.

N. 42. W. 114  
N. 55. W. 20  
N. 73. W. 21.6  
S. 77. W. 29.3  
S. 54. W. 27  
S. 40. W. 26  
S. 29. W. 64  
S. 32. W. 12 to an Ash



Draft of a tract of land situate on the South side of Juniatta river in Granville Township Mifflin County which appears to have been surveyed by James Harris on the 28th April 1767 in pursuance of a Warrant granted Thomas McCard & James Armstrong dated the 10th April 1755 and determination of the Board of Property 30th of June 1766 and appears to contain 182.2 acrs Allowance of six m. Ch. for Roads &c which I have examined this 6th April 1840

John Shaw D.S.

To Jacob Darde Esqr  
Surveyor Gen<sup>l</sup> of P.A.

IN TESTIMONY that the above is a copy of the original remaining on file in the Department of Internal Affairs of Pennsylvania, made conformably to an Act of Assembly approved the 16th day of February, 1833, I have hereunto set my Hand and caused the Seal of said Department to be affixed at Harrisburg, this

sixth day of July, 1897

James W. Patton  
Secretary of Internal Affairs.